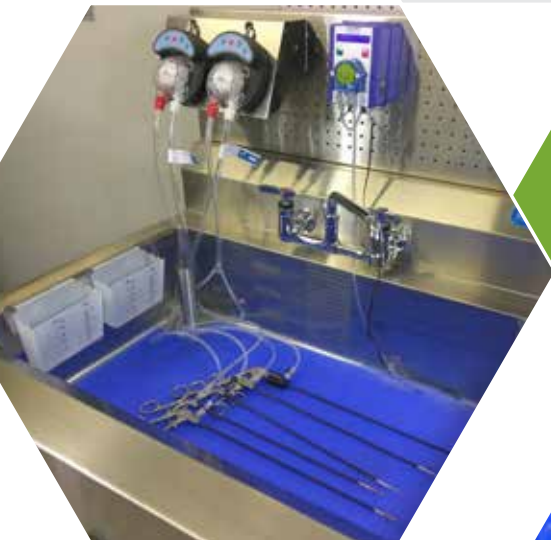




pure PROCESSING



PRODUCT CATALOG



FlexiPump™ Independent Flushing System



1

PSFPS-01

"Our FlexiPump Independent Flushing System™ is a lifesaver. The thought of going back to manually flushing with syringes is a nightmare after being spoiled with your product."

"The FlexiPump has allowed us to flush multiple instruments at one time and has also helped save our hand, so we don't have to constantly draw up fluid in a syringe."

- Flush multiple instruments at once during pre-cleaning through each through each FlexiPump unit
- Adaptable to a wide variety of reusable lumened devices, including rigid and flexible scopes, MIS, ocular, robotic, suction tips and more
- An Impact Cycle safely loosens difficult to remove bio-burden clogs
- Small footprint allows counter, sink wall, peg board or back wall, inside PureStation™ Sink Inserts, multiple pump bracket and 2 Gallon Tank installation options
- Pressure relief valves help protect instruments during flushing
- *Nest included*

FlexiPump video demonstration: www.pure-processing.com/video/

FlexiPump™ 2 Gallon Tank



- Easily used in a sink basin or on countertops for continuous, copious flushing of channeled instruments
- Includes FlexiPump System and 2 Gallon Tank

1

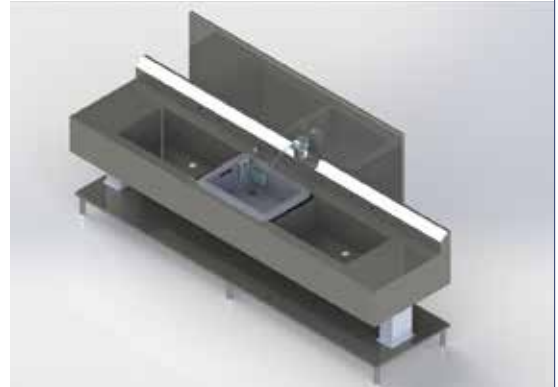
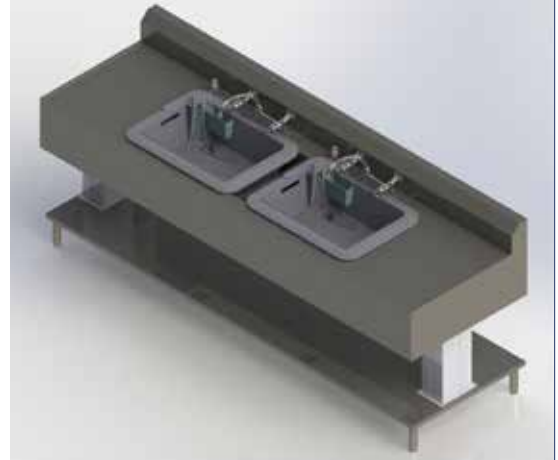
FP-2GAL

| FLUSHING ACCESSORIES | QTY | PRODUCT ID# |
|---|--|--|
| PureChannel™ Flush Touch-less Auto Dispenser | | |
|  <ul style="list-style-type: none"> Automated touch-less technology Reduces chemical handling Dosage readout Prevents under and over dosing Temperature readout | 1 each | PCFTAD-01 |
| PureChannel™ Flush Instrument Channel Cleaner and Foam | | |
|  <ul style="list-style-type: none"> A triple enzyme surfactant formulation that is designed for soaking and flushing medical devices with hard-to clean narrow channels Dilutes at 1/4 oz. per gallon Safe to use on most delicate rigid and flexible scopes Can be used as a foaming agent Highly effective as both a liquid and foam Easy to use with the FlexiPump™ Independent Flushing System, in sonic cleaners, or for manual cleaning in a sink <i>Sample kits per request</i> | 12 x 32 oz. 12 x 32 oz. 4 x 1 gallon 1 Spray Nozzle* <i>*Spray Nozzle must be purchased separately</i> | PCF-2oz PCF-32oz PCF-08 PCF-SPRAY01 |
| ProSpray™ Surface Disinfectant | | |
|  <ul style="list-style-type: none"> One step ready-to-use disinfectant/cleaner Safe for use on electronics, PureStation Sink Inserts, and FlexiPump tubing <i>Sample kits per request</i> | 15 x 24 oz 4 x 1 gallon | PSC240-1 PSC128-1 |
| ProSpray™ Wipes | | |
|  <ul style="list-style-type: none"> Surface Disinfectant/Cleaner Towelettes Ready-to-use pre-saturated towelettes with broad spectrum anti-microbial disinfectant and cleaning action. One step cleaner, disinfectant, and deodorizer | 72 per Soft Pack - 12/Case 240 per Canister - 12/Case 135 per Tall Canister - 12/Case | PSW PSWC PSWCT |
| ProWash™ Multi-Purpose Instrument Detergent and Cart Wash | | |
|  <ul style="list-style-type: none"> Premium neutral pH multi-purpose detergent suitable for use in manual and automated systems including washer/disinfectors, cart washers and ultrasonic instrument cleaning devices. Safe for eye instruments | 4 x 1 gallon 5 gallon drum 15 gallon drum | PRW128-1 PRW640-1 PRW-1920 |

PureSteel™ Healthcare Reprocessing Sink



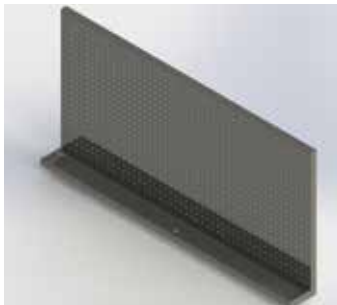
- Electric push button allows precise personal height adjustment
- Reduces risk of device damage and employee injury by making workstations ergonomic for each user
- Ergonomic, slanted wrist edges on side of sink basin remove pinch points during reprocessing
- Optional posterior pegboard to help organize counter space and pre-cleaning materials
- Height-adjustable
- Adheres to industry guidelines for reprocessing and ergonomics
- Standard sizes: 78", 96", or 120"
- Custom sizes available



1

CUSTOM

PureSteel™ Healthcare Reprocessing Sink Pegboard



- Posterior pegboard that adjusts automatically as the sink height changes that can easily accommodate a wide range of accessories to organize reprocessing.

1

CUSTOM

PureSteel™ Pegboard Panels



- Individual pegboard panels for back wall organization
- Install pre-cleaning accessories at a comfortable working height and keep counters organized

1 2x2

1 2x4

SSS-PB-2x2

SSS-PB-2x4

| SPECIALTY SINKS | QTY | PRODUCT ID# |
|--|----------------------------|---|
| PureSteel™ XI Sink | | |
|  <ul style="list-style-type: none"> • Process instruments in a dedicated sink space • Fixed or height-adjustable • Ergonomic, slanted wrist edges on side of sink basin remove pinch points during reprocessing • 30 x 34 footprint creates a compact workspace for small reprocessing departments with high workflow • Delivered with an accessory package that includes: <ul style="list-style-type: none"> - FlexiPump™ Independent Flushing Systems - 1 PureChannel™ Flush Touch-less Auto Dispenser - A custom fit Pure LandingPad™ Silicone Sink Liner - Three perforated containers for brushes and small parts - Stainless steel back splash • May be sold as a standalone unit • Customizable packages available | 1 each | PSXI-SINK |
| HEALTHCARE REPROCESSING SINK ACCESSORIES | QTY | PRODUCT ID# |
| Pure LandingPad™ Surface Liner | | |
|  <ul style="list-style-type: none"> • Protects delicate devices; cushions surfaces where expensive endoscopes and other devices are staged for pre-cleaning • A ¾-inch thick nitrile rubber foam blend resists hospital-grade cleaning chemicals and disinfectants, and won't absorb liquid | 3 per pack | PLPSL-1824-03 |
| Pure LandingPad™ Silicone Sink Liner | | |
|  <ul style="list-style-type: none"> • 20 x 20 silicone sink landing pad to protect delicate instruments, such as endoscopes • Available in custom sizes | 1 each 2 each 3 each | PLP20x20-01 PLP20x20-02 PLP20x20-03 |

| HEALTHCARE REPROCESSING SINK ACCESSORIES | | QTY | PRODUCT ID# |
|--|-------------------|--------------|-------------|
| Automated Endoscope Reprocessing Rack | | | |
|  <ul style="list-style-type: none"> • Hangs on a wall; can plug adapter in close to the AER or sonic • Keeps tubes organized • Hangs up to 11 adapters | STERIS | 1 each | AER-TSO-01 |
| | MEDIVATORS | 1 each | AER-TSO-02 |
| | EVOTECH | 1 each | AER-TSO-03 |
| | OLYMPUS | 1 each | AER-TSO-04 |
| PureSteel™ Enzyme Solution/Rinse Tanks | | | |
|  <ul style="list-style-type: none"> • 2 gallon enzyme solution and rinse tanks | | 1 Container | PS-ESRT-01 |
| | | 2 Containers | PS-ESRT-02 |
| PureSteel™ 32oz Bottle Holder | | | |
|  <ul style="list-style-type: none"> • Keeps bottles at a convenient height • Adheres to back wall of a sink • Holds one, two or three 32oz bottles • Made from Stainless Steel | Single | 1 each | SBH-01 |
| | Double (pictured) | 1 each | DBH-02 |
| | Triple | 1 each | TBH-03 |
| PureSteel™ Gallon Holder | | | |
|  <ul style="list-style-type: none"> • Conveniently keeps gallon bottles organized • Adheres to back wall of a sink • Holds one, two or three, 1 gallon bottles • Made from Stainless Steel | Single | 1 each | SGH-01 |
| | Double (pictured) | 1 each | DGH-02 |
| | Triple | 1 each | TGH-03 |

| HEALTHCARE REPROCESSING SINK ACCESSORIES | QTY | PRODUCT ID# |
|---|--------------------------------------|--------------------|
| Brush Bath/Shelf | | |
|  <ul style="list-style-type: none"> • Allows instruments to soak • Adheres to back wall of a sink • Built in draining system • Made from Stainless Steel | 1 each | BBATH-01 |
| Digital Thermometer | | |
|  <ul style="list-style-type: none"> • Displays cleaning solution temperature • Programmed to alarm when enzymatic cleaning solution temperature is out of range (80 F - 120 F) . | | PS-DTHERMO |
| FlexiPump™ Multi-Pump Brackets | | |
|  <ul style="list-style-type: none"> • Comfortably nests two or three FlexiPump Systems onto a back wall, pegboard or on a counter • Made from Stainless Steel | 1 bracket Double Triple | FP-DBBR FP-TRBR |
| DuraWick™ Counter Towels | | |
|  <ul style="list-style-type: none"> • Created to last through several rounds of tools • The top layer of material wicks away moisture, which is then absorbed into the middle layer of the product, keeping your sterilization area clean and sanitary • 13"x 18" size | 100 per case | DWCT-100 |

SINK INSERTS

QTY

PRODUCT ID#

PureStation™ Sink Insert



- Drain that filters small devices
- Cleaning Solution Container
- Rinse Solution Container
- Perforated Brush Holder
- Thermometer Strip
- Optimal water volume markings

- Accurate chemical dilution markings
- Overflow Prevention Drain
- Drain Plug
- *FlexiPump System must be purchased separately*

1 each

PS1616

1 each

PS1626

PureStation™ Dedicated Eye Sink



pure
PROCESSING

EYE Instruments Only

Discard H₂O used to clean or rinse after each use
Follow device manufacturer's instructions for use

www.pure-processing.com

(877) 718-6868

16 x 16

1 each

PS1616-EYE

16 x 26

1 each

PS1626-EYE

- For compliance, permanent label that states: "EYE INSTRUMENTS ONLY;" "Discard water used to clean or rinse after each use," and "Follow device manufacturer's instructions for use"
- Light and compact sink can easily be stored on a shelf
- Drain that filters small devices
- Cleaning Solution Container






- Rinse Solution Container
- Perforated Brush Holder
- Thermometer Strip
- Optimal water volume markings
- Accurate chemical dilution markings
- Overflow Prevention Drain
- Drain Plug
- *FlexiPump System must be purchased separately*

| SINK INSERTS | QTY | PRODUCT ID# |
|---|--|---|
| EndoBath® High Level Disinfection Device | | |
|  | <ul style="list-style-type: none"> • Soaking basin system that safely soaks endoscopes in high level disinfectants and sterilants • Captures information from each endoscope sterilization cycle • Temperature controlled • Draining valve makes draining safer and more ergonomic for users • Reduced evaporation of solutions • Cuts fume production of HLD and sterilants • Low volume basin saves money on HLD and sterilants • Reduces splashing when loading and draining endoscopes | <p>1 each</p> <p>ENDOBATH</p> |
| PureClear® Inspection Scopes | | |
|  | <ul style="list-style-type: none"> • Allow technicians and nurses to visually inspect lumens and devices for debris and damage • Inspects channels, connection points, distal tips, and spaces behind elevator channels • Provide video and high resolution photo documentation with date, device ID, and time stamps • Use on new, repaired, refurbished, and loaned instrumentation | <p>1 each</p> <p>1 each</p> <p>1 each</p> <p>C1-800 Model</p> <p>C2-350 Model</p> <p>C2-950 Model</p> |

| MOBILE CARTS | QTY | PRODUCT ID# | |
|--|--|---|--|
| PureStation™ Mobile Cart | | | |
|  <ul style="list-style-type: none"> • Enables point-of-use pre-cleaning • Can be stored out of the way and brought out at peak processing hours as an additional sink station • Can be used to establish a separate dedicated pre-cleaning area for specified instruments • <i>Must be used with the PureStation™ Sink Insert</i> | <p>Mobile Cart</p> <p>PureStation™ Sink Insert</p> <p>Transfer Pump Kit or Ball Valve Drain Kit</p> <p><i>Optional:</i> PureStation™ Transport Lids</p> | <p>1</p> <p>1</p> <p>1</p> <p>1</p> <p></p> <p></p> | <p>PSCART-1626</p> <p>PS1626</p> <p>SSCTP</p> <p>PSBV-1KIT</p> <p></p> <p>PS-Lid</p> |
| PureStation™ Four Tiered and Three Tiered Work Station Carts | | | |
|  <ul style="list-style-type: none"> • Mobile transport cart for staging and reprocessing wide variety of instrumentation including robotics, urology, ocular, and flexible scopes • Ideal for tight reprocessing departments that need vertical storage or additional pre-cleaning space • Seamlessly fits into pre-existing department set-ups • Three Tiered Work Station Model adds additional counter top space • With or without casters | <p>PureStation™ Four Tiered Transport Cart</p> <p>4 PureStation™ Sink Inserts</p> <p>4 PureStation™ Transport Lids</p> <p>PureStation™ Three Tiered Transport Cart</p> <p>3 PureStation™ Sink Inserts</p> <p>3 PureStation™ Transport Lids</p> | <p></p> <p></p> <p></p> <p></p> <p></p> <p></p> | <p>PSCART-4TIER</p> <p></p> <p>PSCART-3TIER</p> |

| ANTI-FATIGUE MATS | | QTY | PRODUCT ID# |
|--|--|--|--|
| PureComfort™ Anti-Fatigue Mat | | | |
|  <ul style="list-style-type: none"> • Cart washer safe • Custom sizes available | Perforated 3' x 5' 3' x 8' Non-Perforated 3' x 5' 3' x 8' | PCFM3x5 PCFM3x8 PCFMNP3x5 PCFMNP3x8 | |
| GelPro™ OR Anti-Fatigue Mats | | | |
|  <ul style="list-style-type: none"> • Other sizes available, call for more information | Columbia Blue 18" x 24" 20" x 32" 20" x 48" DND Red 18" x 24" 20" x 32" 20" x 48" | 1 each 1 each 1 each 1 each 1 each 1 each | GPMM18x24-B GPMM20x32-B GPMM20x48-B GPMM18x24-R GPMM20x32-R GPMM20x48-R |
| GelPro™ Eco-Pro Anti-Fatigue Mats | | | |
|  <ul style="list-style-type: none"> • Black and yellow • Other sizes available, call for more information | 20" x 32" 20" x 48" 20" x 72" 24" x 36" 36" x 60" | 1 each 1 each 1 each 1 each 1 each | GPAFM20x32 GPAFM20x48 GPAFM24x36 GPAFM36x60 GPAFM20x72 |
| GelPro™ Disposable Surgical Comfort Floor Mat | | | |
|  <ul style="list-style-type: none"> • One-time use, disposable floor mats for added ergonomics in work spaces | 13" x 17" 18" x 30" | Case of 10 Case of 5 | GPDM-13x17-10 GPDM-18x30-5 |
| GelPro™ Comfort Cushion Insoles | | | |
|  <ul style="list-style-type: none"> • Cushions feet during long periods of work or standing • Up to a month's wear of use | Small Medium Large | 12 pairs per case 12 pairs per case 12 pairs per case | GPCCI-S GPCCI-M GPCCI-L |
| DECONTAM SAFETY | | QTY | PRODUCT ID# |
| TIDIShield® Grab 'n Go™ Disposable Face Shields | | | |
|  <ul style="list-style-type: none"> • Disposable, pre-assembled, optical-grade face shields with adjustable elastic strap and over-the-top splash guard • Vented foam headband makes keeps face shields fog-free | 12" x 9.5" size 40 each 96 each 1 box of 24 12" x 7.5" size 40 each 96 each 1 box of 24 | TFS-40-01 TFS-96-01 TFS-24-01 TFS-40-02 TFS-96-02 TFS-24-02 | |

| DECONTAM SAFETY | QTY | PRODUCT ID# |
|--|--|-----------------------------|
| TIDIShield® Assemble 'n Go™ Face Shield | | |
|  <ul style="list-style-type: none"> • Lightweight, adjustable design for comfort • Includes a nose piece for secure fit • Maximizes air flow and prevents fogging | 40 shields per dispenser; 160 shields per case 1 case of 40 | TFS-202040 TFS-40-03 |
| TIDIShield® Eye Shields | | |
|  <ul style="list-style-type: none"> • Eye shield dispensers are easily portable so eye protection is always available • Position the dispenser at point-of-use using a plastic dispenser holder | Clear - 100 frames and 100 lenses per dispenser (4 dispensers per case) 1 box of 25 | TES-100 TES-25 |
| VR™ Shoe Covers | | |
|  <ul style="list-style-type: none"> • Available in 4 mil and 6 mil • Anti-slip grip texture for better traction • Superior foot and shoe coverage with secure elastic top • Designed for comfort and flexibility | 4 mil - 100 pairs per case Regular SCR-4MIL Large SCL-4MIL 6 mil - 100 pairs per case Regular SCR-6MIL Large SCL-6MIL | |
| Powderfree Latex Gloves 14 mil | | |
|  <ul style="list-style-type: none"> • Puncture resistant • Latex Specialty Gloves deliver superior protection while cleaning and sterilizing instruments • Made with natural rubber latex, all gloves have been tested to applicable ASTM standards | 20 dispenser boxes of 50 gloves Small DGS-14mil Medium DGM-14mil Large DGL-14mil Extra-Large DGXL-14mil 1 box of 50 Small DGS-14mil-50 Medium DGM-14mil-50 Large DGL-14mil-50 Extra-Large DGXL-14mil-50 | |
| Powderfree Latex Gloves 18 mil | | |
|  <ul style="list-style-type: none"> • Puncture resistant • Latex Specialty Gloves deliver superior protection while cleaning and sterilizing instruments • Made with natural rubber latex, all gloves have been tested to applicable ASTM standards | 10 dispenser boxes of 50 pair Small DGS-18mil Medium DGM-18mil Large DGL-18mil Extra-Large DGXL-18mil 1 box of 50 Small DGS-18mil-50 Medium DGM-18mil-50 Large DGL-18mil-50 Extra-Large DGXL-18mil-50 | |

| DECONTAM SAFETY | | QTY | PRODUCT ID# |
|---|---|---|-------------|
| Powder and Latex Free Nitrile Gloves | | | |
|  <ul style="list-style-type: none"> • Nitrile Gloves provide a non-latex alternative to latex gloves while still providing the same strong amount of protection • Our Nitrile gloves have been tested to applicable ASTM standards • Superior protection while cleaning and sterilizing instruments. | <p>10 dispenser boxes of 50 gloves</p> <p>Small Medium Large Extra-Large</p> <p>1 box of 50</p> <p>Small Medium Large Extra-Large</p> | <p>NGS NGM NGL NGXL</p> <p>NGS-50 NGM-50 NGL-50 NGXL-50</p> | |
| VR™ Sleeve Gloves | | | |
|  <ul style="list-style-type: none"> • Latex free sleeve gloves provide 29 inches of coverage • Ultimate protection while cleaning instruments • Can be reused throughout the day • Puncture and tear resistant | <p>100 (50 Pair)</p> <p>Small Medium Large Extra-Large</p> | <p>SGS-50 SGM-50 SGL-50 SGXL-50</p> | |
| TIDI® Shield Gowns | | | |
|  <ul style="list-style-type: none"> • Provides a level of protection against infectious materials • Passes ASTM F1671 and ASTM F1670 standards • One-size • Latex Free • Disposable | <p>75 per case</p> <p>15 per box</p> | <p>TDGOWN-75</p> <p>TDGOWN-15</p> | |
| TIDIShield® SafetyPlus™ Polyethylene Gown | | | |
|  <ul style="list-style-type: none"> • Open back allows for increased comfort and airflow • Stirrup cuffs keep gown in place so wrists are protected from fluids and infectious material • Latex-free, offering a hypoallergenic solution • One-size | <p>5 dispensers of 15 gowns; Case of 75 gowns</p> <p>1 box of 15 gowns</p> | <p>SPPG-75</p> <p>SPPG-15</p> | |
| TIDIShield® Chemotherapy Gowns | | | |
|  <ul style="list-style-type: none"> • Closed back design for ultimate protection • Long sleeves with knit cuffs • Ties at waist with Velcro® closure at neck • Meets OSHA, ASHP, ONS recommendations for wearing gowns when handling chemotherapy drugs | <p>10 gowns per bag; 30 gowns per case</p> <p>Universal Extra-Large</p> | <p>TDCHM-U-30 TDCHM-XL-30</p> | |

| FLEXIPUMP™ ACCESSORIES | QTY | PRODUCT ID# |
|---|--|--|
| FlexiPump™ Accessory Kit | | |
|  <ul style="list-style-type: none"> • Includes 50 XL Slip Tips, 25 End Caps, 20 Female to Female Luers, and 5 Cup Adapters • Attaches to various instruments; robotics, ocular, reamers and more | 1 kit | ACC-KIT |
| FlexiPump™ Pre-Assembled Pump Cap and Tube Set | | |
|  <ul style="list-style-type: none"> • Includes a pre-threaded device tube set, new pump cap and rotor for easy installation and convenience • Available in two, three or five device configurations | 15 PSI 1 each 1 each 1 each 30 PSI 1 each 1 each | FXITS-PREA0215psi6 FXITS-PREA0315psi6 FXITS-PREA0515psi6 FXITS-PREA0230psi6 FXITS-PREA0330psi6 |
| FlexiPump™ Irrigation Tube Sets, 5 Devices | | |
|  <ul style="list-style-type: none"> • Flushes up to five devices at a time • 15 psi only • Best for ocular instruments or suction tips | 15 PSI Box of 6 Individual | FXITS-0515PSI6 FXITS-0515PSI6-01 |
| FlexiPump™ Irrigation Tube Sets, 3 Devices | | |
|  <ul style="list-style-type: none"> • Flushes up to three devices at a time • 15 or 30 psi settings • 30 PSI tube sets for robotic instruments | 15 PSI Box of 6 Individual 30 PSI Box of 6 Individual | FXITS-0315PSI6 FXITS-0315PSI6-01 FXITS-0330PSI6 FXITS-0330PSI6-01 |
| FlexiPump™ Irrigation Double Set, 2 Devices | | |
|  <ul style="list-style-type: none"> • Flushes up to two devices at a time • 15 or 30 psi settings • 30 PSI tube sets for robotic instruments | 15 PSI Box of 6 Individual 30 PSI Box of 6 Individual | FXITS-0215PSI6 FXITS-0215PSI6-01 FXITS-0230PSI6 FXITS-0230PSI6-01 |

| FLEXIPUMP™ ACCESSORIES | | QTY | PRODUCT ID# |
|---|--|--|-------------------------------------|
| TimeStrip® Time Indicators | | | |
|  <ul style="list-style-type: none"> Timestrip® Time Indicators offer a helpful visual reminder of service and maintenance schedules for consumable components Accurate and reliable | Available in: 1 month 3 month 6 month 12 month | 100 each 100 each 100 each 100 each | TM-1M TM-3M TM-6M TM-12M |
| FlexiPump™ Ceramic Weight and Screen | | | |
|  <ul style="list-style-type: none"> Ceramic Weight and Screen to anchor the down tube of Flexi-Pump tube set beneath water | | 1 each | FPCW-01 |
| XL Slip Tip Adapter | | | |
|  <ul style="list-style-type: none"> Flush two ports simultaneously on robotic devices by using XL Slip Tip Adapter | | 10 each 30 each 50 each | XLSLIP-10 XLSLIP-30 XLSLIP-50 |
| Female to Female Luer Locks | | | |
|  <ul style="list-style-type: none"> Used on devices with female luers | | 10 each 30 each 50 each | FFLL-10 FFLL-30 FFLL-50 |
| Rubber Cup Connector | | | |
|  <ul style="list-style-type: none"> Used on devices that do not have luers. Slide the cup end over device. Slide slip tip of tube luer on irrigation tube set into other end and flush | | 10 each | RCA-01 |
| End Caps | | | |
|  <ul style="list-style-type: none"> Used to cap off tube leads that are not being used | | 10 each | PSFP-EC-10 |

| PURESTATION™ ACCESSORIES | | QTY | PRODUCT ID# |
|--|--|---|-------------|
| Small Device and Solution Container Kit | | | |
|  | <ul style="list-style-type: none"> • 2 solution containers • 1 small device container with perforation | 1 Kit | DSC-KIT |
| PureStation™ Thermometer Strips | | | |
|  | <ul style="list-style-type: none"> • Peel and stick to sinks, basins or bowl; wherever enzyme solution is used • Highlights optimal enzymatic temperature range between 80°F (26°C) and 120°F (50°C) | 5 per pack | THERMO-01 |
| Pump Rotor | | | |
|  | <ul style="list-style-type: none"> • Pump Rotor continuously rotates to ensure flow of enzymatic in tube sets | FlexiPump™ Independent Flushing System 10 each | FLX-ROTOR |
| Pump Cap | | | |
|  | <ul style="list-style-type: none"> • Pump Cap holds and protects the pump rotor | FlexiPump system 10 each | FLX-CAP |
| Power Supply | | | |
|  | <ul style="list-style-type: none"> • Connects the FlexiPump System into the outlet • International available | FlexiPump system 1 each | FPPS-01 |
| Drain plug with chain | | | |
|  | <ul style="list-style-type: none"> • Tethers drain plug to sink insert | 5 each | DPWCHAIN |

Please contact our customer service group for a quote at 877.718.6868